



Digital Imaging: A Start

by Alicia Bingham

Table of Contents



Fine Art Image	Table of Contents, 1
High Dynamic Range	2
Bannack Ghost Town	4
Panorama	8
Flora and Fauna	10
Portraits	12
Enhancements	13
Past Photos	14
Adjustments	16
Blending	17
Cutouts	18
Camera Raw	19
About Me	20

Before



HDR

High Dynamic Range



After

Before

I took this image while I was at Bannack. I brought this small bowl with me, and another student brought the jewels, so I put them together to see how it looked. Initially I had it on the table; but as soon as I moved it to the chair, I found that I really liked the colors and the look of the shot. The slant of the chair gave it a great angle, and I just loved how it turned out.



After

I thought I would try it out in Photomatrix, to see how that could boost my image. So I took it in there and did tone mapping on it, picked the setting that I thought looked good, and then I played around with all the sliders to get the effect I wanted.

After playing with it in Photomatrix, I took it into Photoshop for some last touches, masking in some sharpening on the jewels with the Smart Sharpen tool.

Bannack Ghost Town





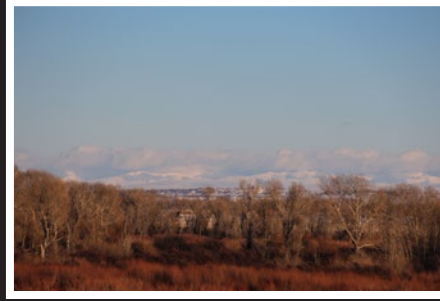
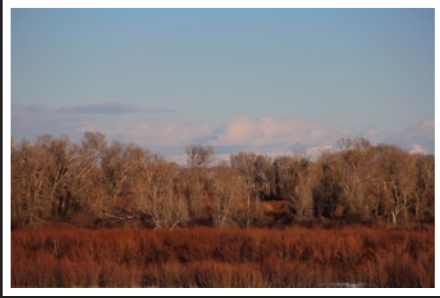




Panorama



Before Images





Flora and Fauna

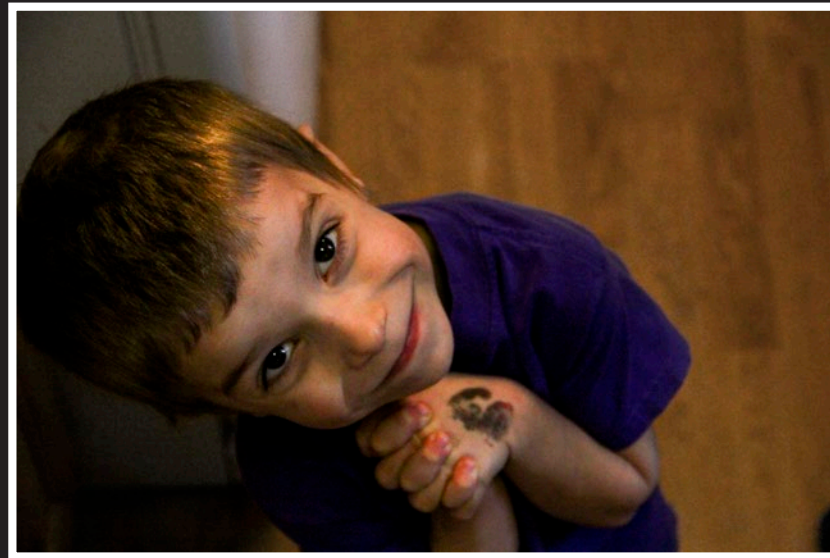
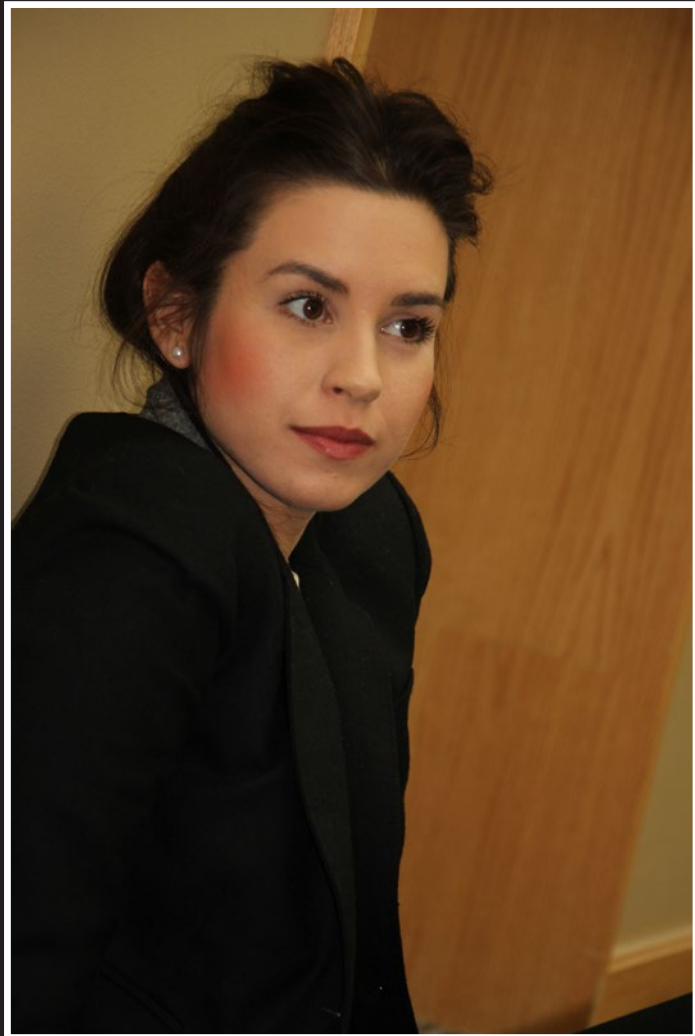
This was a difficult project simply because it was winter, so there wasn't much by way of plants growing and animals running around.

However, I managed to find a poinsettia in the office where I am interning at. For the cat, I thank my neighbors who happened to let their cat out at just the right moment. She kept following me around and would hold still, just staring at me, so I snapped the picture.



I did some edits on each photo, mainly with the levels, saturation, sharpening and adding some gradients. I took out the saturation from the cat and masked out the eyes and nose, so the color would remain in those parts. Overall, these are the results I ended up with.

Portraits



Enhancements



Before



After

Past Photos





Adjustments

For the Cutco image, I simply added an adjustment layer to decrease the saturation completely out of the picture. Then I added a mask to that layer and masked out just the portion on the blade of the knife, so the color would show up there and no where else. This is the effect I got.



Blending



Cutouts

I took each image into Photoshop and used the Quick Select tool to just pick out the shape I wanted. I resized the quick select tool to get a better selection, and then I clicked “Refine Edge” and put a little feathering and softening of the edges on it to help it look a little better. I put the cookies on a black background to help it stand out a little more. As for the flower, I simply copied the selection and pasted it into a new document with a transparent background.



Camera Raw



About Me

Photography, editing, design, and
writing by Alicia Bingham



I have loved taking pictures for many years, but I didn't know any rules of photography or how to edit. Finally I was able to take a digital imaging class, which taught me the basics of photography in the images you see in this book. For more pictures, visit my blog:
aliciabingham.wordpress.com

